

PTZ Control

Focus + -

Iris + -


Zoom - +

Light Brush

Call Preset

Video Encode

- IP-kamera 1
- IP-kamera 2



Klikk på "Local Set"

Etter at programmet er installert og skal åpnes, skal ikke brukernavn og passord fylles ut!

PTZ Control Focus

 Iris

 Zoom

 Light

 Call

- Video Encode
- IP-kamera 1
- IP-kamera 2

Local Setup

Log View Setup Ex Stream Matrix Virtual Matrix

Common Setup Local Picture View Video Switch On Group On Time Record Service

Local Record Disk:

Disk	%Free	Free	Total
<input type="checkbox"/> C:\	81.34%	253073.69M	311130.00M
<input checked="" type="checkbox"/> D:\	51.61%	6341.47M	12288.00M
<input type="checkbox"/> E:\	99.93%	153414.75M	153519.00M
<input type="checkbox"/> L:\	63.60%	1212854.68M	1907058.96M

Velg hvilken hardisk opptak skal lagres på

Enable Snapshot. (5-600)Second/Pic

Server Manage

Server Name	IP/DNS	Port	Device Type

Velg "Enable Auto Logon Client" slik at du slipper å logge på hver gang.

User And Password

Local User(U):

UserName	Power
	Admin
	Operator

To change the password for <Admin>, click Set Password.

Environment

Enable Prestore Record s

Enable Auto Reconnect

Enable Sound Alarm

Enable Auto Logon Client

Record Size:

MaxTime Minute

MaxSize M Bytes

Keep Free Space M Bytes

Klikk på "Add"
 for å legge inn
 IP-adressene

PTZ Control Focus
Iris
Zoom
Light
Call

- Video Encode
- IP-kamera 1
- IP-kamera 2

Local Setup

Log View

Common Set

Local Record

Disk

- C:\
- D:\
- E:\
- L:\

Enable Sn

Server Mana

Server Nam

- IP-kamera
- IP-kamera

Modify Server

Server Type: NetVideo Server(LC)

Address: 84.211.242.61 *Legg inn IP-adressen*

Local Name: IP-kamera 1 *Gi kamera et navn*

Remote Name:

CMD Port: 3000 *Legg inn port*

Remark:

Group: Video Encode Group Set

Information:

Enable Auto Logon *Velg "Auto Logon"*

Channel Num: 1 *Velg kanalnummer*

User Name: bruker Password:

Legg inn brukernavn og passord

View Video By RTSP

Channel: Channel1

RTSP link:

Ok Cancel

PTZ Control

Focus

Iris

Zoom

Light

Call

- Video Encode
- IP-kamera 1
- IP-kamera 2

Local Setup

Log View

Common Set

Local Record

Disk

- C:\
- D:\
- E:\
- L:\

Enable Sn

Server Mana

Server Name

- IP-kamera
- IP-kamera

Modify Server

Server Type: NetVideo Server

Address: 84.211.242.61 **Legg inn IP-adressen**

Local Name: IP-kamera 2 **Gi kamera et navn**

Remote Name:

CMD Port: 8200 **Legg inn port**

Remark:

Group: Video Encode

Information:

Enable Auto Logon **Velg "Auto Logon"**

Channel Num: 2 **Velg kanalnummer**

User Name: bruker Password:

Legg inn brukernavn og passord

View Video By RTSP

Channel: Channel1

RTSP link:

PTZ Control

Focus

Iris

Zoom

Light

Call

Video Encode

- IP-kamera 1
- IP-kamera 2
- Skjold

Local Setup

Log View

Common Set

Local Record

Disk

- C:\
- D:\
- E:\
- L:\

Enable Sn

Server Mana

Server Name

- IP-kamera
- IP-kamera
- Skjold

Modify Server

Server Type: NetVideo Server(LC)

Address: 81.166.132.95

Local Name: Skjold

Remote Name:

CMD Port: 3000

Remark:

Group: Video Encode Group Set

Information:

Enable Auto Logon

Channel Num: 1

User Name: bruker Password:

View Video By RTSP

Channel: Channel1

RTSP link:

Ok Cancel

PTZ Control

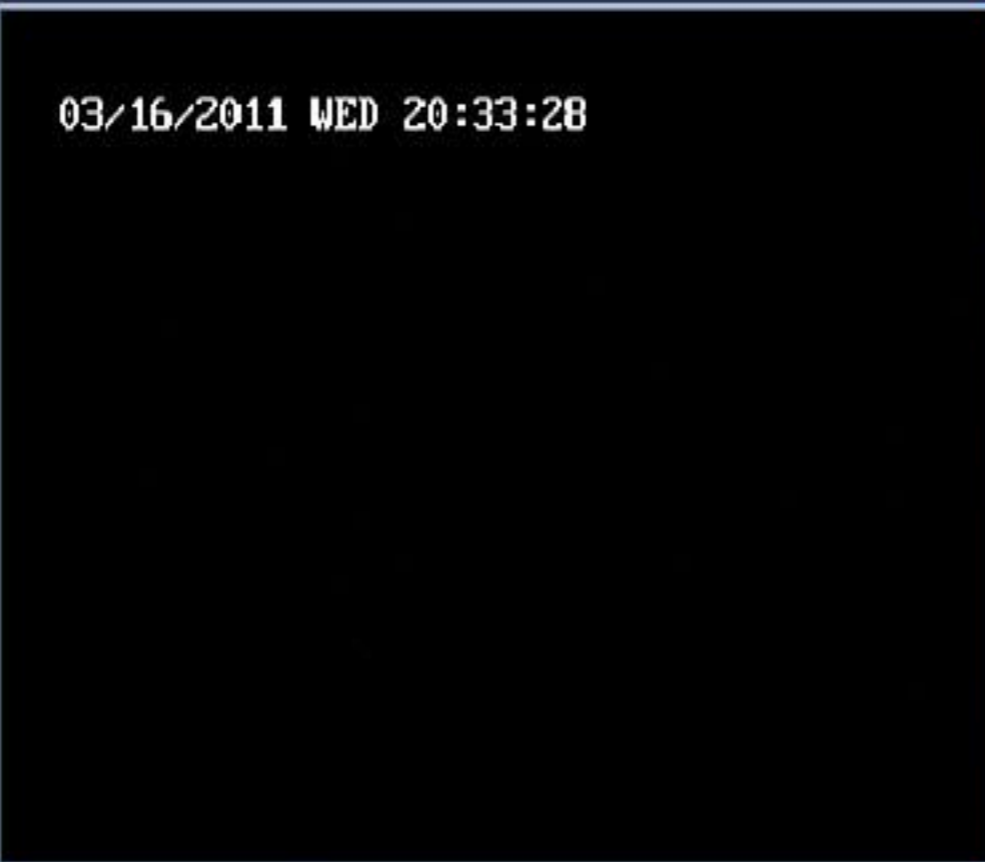
Focus + -

Iris + -

Zoom - +

Light Brush

Call Preset



Video Encode

- IP-kamera 1 (dobbel-klikk)
- Channel01 (dobbel-klikk)
- IP-kamera 2
- Channel-1